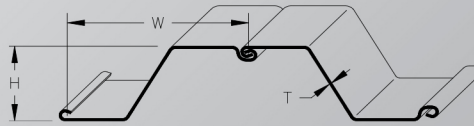


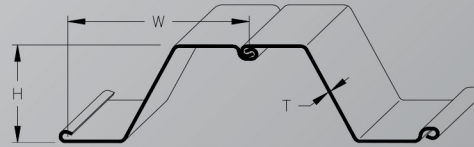
"EZ" SERIES



NOTE: METRIC VALUES IN BRACKETS

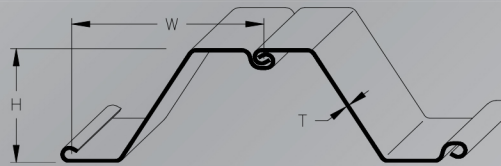
Section	Thickness T in (mm)	Height H in (mm)	Nominal Width W in (mm)	Section Area in ² (mm) ²	Weight lbs/lin ft. (kg/lin m)	Weight lbs/ft ² (kg/m ²)	Moment of Inertia in ⁴ /wall ft (cm ⁴ /wall m)	Radius of Gyration in (mm)	Section Modulus in ³ /wall ft (cm ³ /wall m)
EZ80	.315 (8.00)	10.75 (273)	25.0 (635)	12.1 (77.9)	41.1 (61.2)	19.8 (96.4)	110 (15000)	4.35 (110)	20.5 (1100)
EZ88	.344 (8.75)	10.78 (274)	25.0 (635)	13.2 (85.1)	44.9 (66.8)	21.6 (105)	121 (16500)	4.36 (111)	22.4 (1200)
EZ95	.375 (9.50)	10.81 (275)	25.0 (635)	14.4 (92.7)	48.9 (72.8)	23.5 (115)	131 (17900)	4.36 (111)	24.4 (1310)

"XZ" SERIES



Section	Thickness T in (mm)	Height H in (mm)	Nominal Width W in (mm)	Section Area in ² (mm) ²	Weight lbs/lin ft. (kg/lin m)	Weight lbs/ft ² (kg/m ²)	Moment of Inertia in ⁴ /wall ft (cm ⁴ /wall m)	Radius of Gyration in (mm)	Section Modulus in ³ /wall ft (cm ³ /wall m)
XZ85	.335 (8.50)	14.06 (357)	25.0 (635)	13.6 (87.9)	46.4 (69.0)	22.3 (109)	212 (29000)	5.70 (145)	30.2 (1630)
XZ90	.354 (9.00)	14.09 (358)	25.0 (635)	14.4 (93.0)	48.9 (72.7)	23.5 (115)	225 (30800)	5.70 (145)	31.8 (1710)
ZX95	.375 (9.50)	14.12 (359)	25.0 (635)	15.2 (98.2)	51.7 (76.9)	24.8 (121)	237 (32400)	5.70 (145)	33.5 (1800)
XZ100	.394 (10.0)	14.15 (360)	25.0 (635)	15.9 (103.0)	54.2 (80.7)	26.0 (127)	250 (34200)	5.70 (145)	35.3 (1900)
XZ105	.413 (10.5)	14.17 (360)	25.0 (635)	16.7 (108.0)	56.9 (84.7)	27.3 (133)	263 (35900)	5.70 (145)	37.1 (2000)

"JZ" SERIES

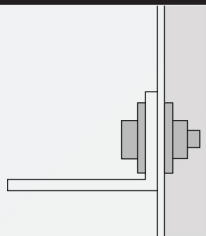


Section	Thickness T in (mm)	Height H in (mm)	Nominal Width W in (mm)	Section Area in ² (mm) ²	Weight lbs/lin ft. (kg/lin m)	Weight lbs/ft ² (kg/m ²)	Moment of Inertia in ⁴ /wall ft (cm ⁴ /wall m)	Radius of Gyration in (mm)	Section Modulus in ³ /wall ft (cm ³ /wall m)
JZ112	.441 (11.2)	16.44 (418)	26.5 (673)	20.1 (129.7)	68.2 (101)	30.9 (151)	374 (51100)	6.41 (163)	45.3 (2430)
JZ120	.472 (12.0)	16.47 (418)	26.5 (673)	21.5 (138.7)	73.0 (109)	33.0 (161)	401 (54700)	6.41 (163)	48.5 (2610)
JZ127	.500 (12.7)	16.50 (419)	26.5 (673)	22.7 (146.5)	77.3 (115)	35.0 (171)	424 (57900)	6.42 (163)	51.4 (2760)

ACCESSORIES

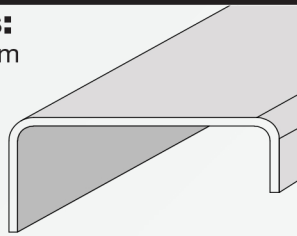
Walers:

available in various shapes and sizes.



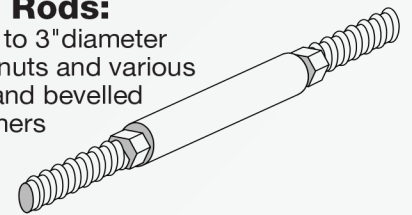
Pile Caps:

various custom designed shapes and sizes.



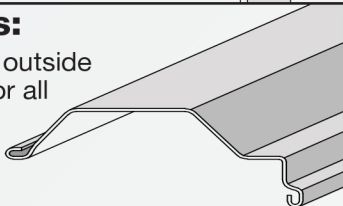
Tie Rods:

3/4" to 3" diameter c/w nuts and various flat and bevelled washers



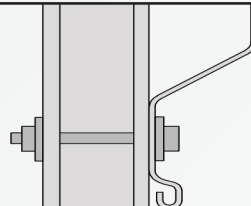
Corners:

inside and outside available for all profiles.



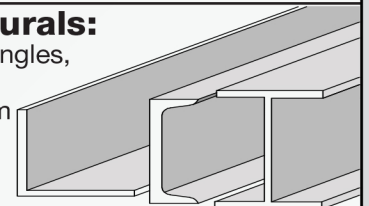
Fasteners:

a full range of bolts, nuts and plate washers.



Structurals:

various angles, channels and beam shapes.



T:602.381.1006

F:602.635.3105

E:peersh@alliancesteeltrading.com

www.alliancesteeltrading.com